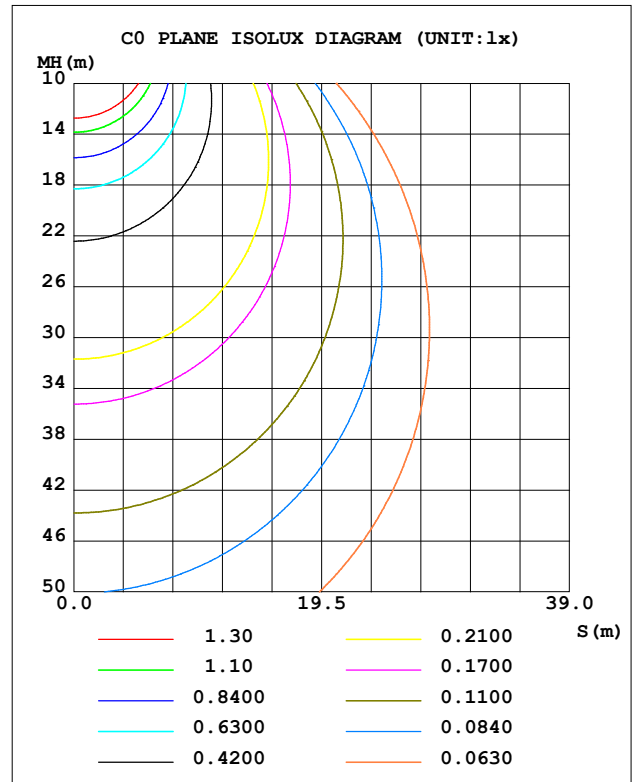
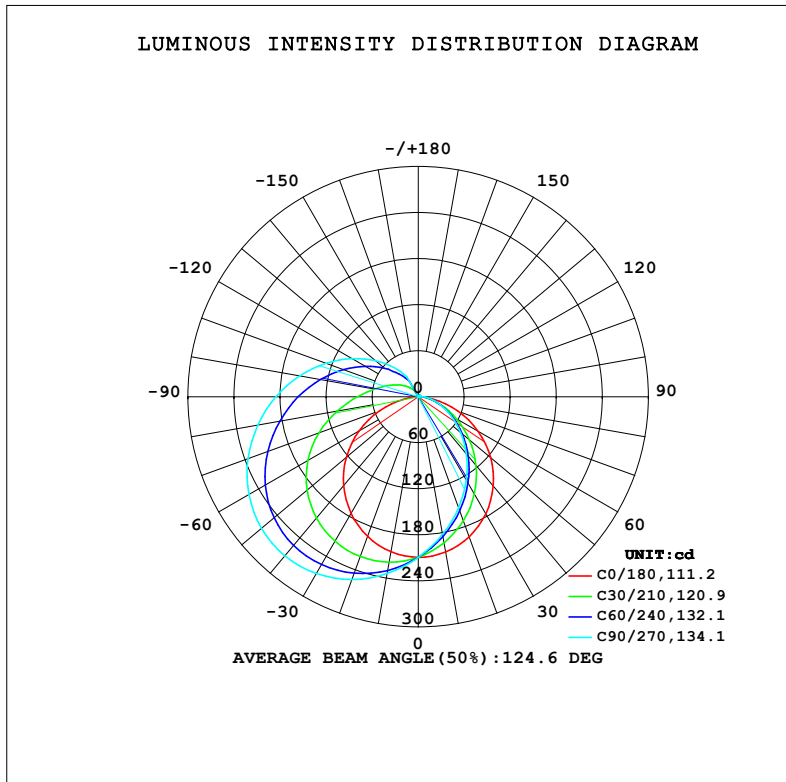


LUMINAIRE PHOTOMETRIC TEST REPORT

NAME: 99LPL12/WH	TYPE:	WEIGHT: 1
SPEC.:	DIM.: 600 x 200 x 25	SERIAL No.: 0
MFR.: Elmark Industries JSC	SUR.: Cilinder	Shielding Angle:

DATA OF LAMP		PHOTOMETRIC DATA			
MODEL	99LPL12/WH	I _{max} (cd)	270.4	S/MH (C0/180)	1.25
NOMINAL POWER (W)	12	LOR (%)	124.3	S/MH (C90/270)	1.88
RATED VOLTAGE (V)	230	TOTAL FLUX (lm)	969.46	η UP, DN (C0-180)	0.7, 28.1
NOMINAL FLUX (lm)	780	CIE CLASS	SEMI-D.	η UP, DN (C180-360)	21.4, 74.2
LAMPS INSIDE	1	η up (%)	22.0	CIBSE SHR NOM	1.50
TEST VOLTAGE (V)	230	η down (%)	102.3	CIBSE SHR MAX	1.50



C Range: 0 - 360DEG
C Interval: 10.0DEG
Test Speed: MEDIUM
Temperature: 25.3°C
Operators:
Test Date: 15 December 2022

γ Range: 0 - 150DEG
γ Interval: 2.5DEG
Test System: EVERFINE GO-2000A_V1 SYSTEM V2.00.456
Humidity: 65.0%
Test Distance: 6.265m [K=1.0000]
Remarks:

ZONAL FLUX DIAGRAM

ZONAL FLUX DIAGRAM:

γ	C0	C45	C90	C135	C180	C225	C270	C315	γ	Φ zone	Φ total	%lum, lamp
10	205.5	188.7	182.3	188.4	205.2	224.9	233.8	225.1	0- 10	19.85	19.85	2.05,2.55
20	194.2	164.3	154.2	163.7	193.6	234.3	253.4	234.7	10- 20	57.51	77.37	7.98,9.92
30	176.1	136.6	125.4	135.8	175.3	236.6	266.0	237.1	20- 30	89.14	166.5	17.2,21.3
40	152.0	107.6	97.61	106.8	151.5	232.0	270.4	232.5	30- 40	111.5	278.0	28.7,35.6
50	123.0	79.30	72.05	78.41	122.3	220.0	266.6	220.4	40- 50	122.7	400.7	41.3,51.4
60	89.96	53.05	49.50	52.23	89.30	201.3	254.6	201.4	50- 60	122.1	522.8	53.9,67
70	54.68	30.82	30.77	30.12	53.76	176.8	236.0	176.7	60- 70	110.9	633.7	65.4,81.2
80	20.36	14.14	16.21	13.72	19.54	149.1	212.2	148.7	70- 80	92.30	726.0	74.9,93.1
90	0.5581	3.880	6.012	3.732	0.4751	121.9	185.7	121.2	80- 90	71.57	797.6	82.3,102
100	0.6396	1.561	2.128	1.626	0.6318	97.12	157.3	96.17	90-100	55.13	852.7	88,109
110	0.8502	1.757	2.289	1.832	0.8504	75.46	128.1	74.38	100-110	42.66	895.4	92.4,115
120	1.082	1.911	2.395	2.006	1.091	56.78	99.66	55.67	110-120	31.42	926.8	95.6,119
130	1.301	2.013	2.406	2.119	1.312	40.57	73.53	39.87	120-130	21.53	948.3	97.8,122
140	1.487	2.056	2.379	2.176	1.504	27.49	50.05	26.83	130-140	13.36	961.7	99.2,123
150	1.641	2.071	2.324	2.195	1.649	15.70	30.45	15.07	140-150	7.212	968.9	99.9,124
160	0	0	0	0	0	0	0	0	150-160	0.5823	969.5	100,124
170	0	0	0	0	0	0	0	0	160-170	0	969.5	100,124
180	0	0	0	0	0	0	0	0	170-180	0	969.5	100,124
DEG	LUMINOUS INTENSITY:cd									UNIT:lm		

Conical surface Flux(90deg): 338.68 lm

%lum = 34.9%
%lamp = 43.4%

Conical surface Flux(130deg): 580.18 lm

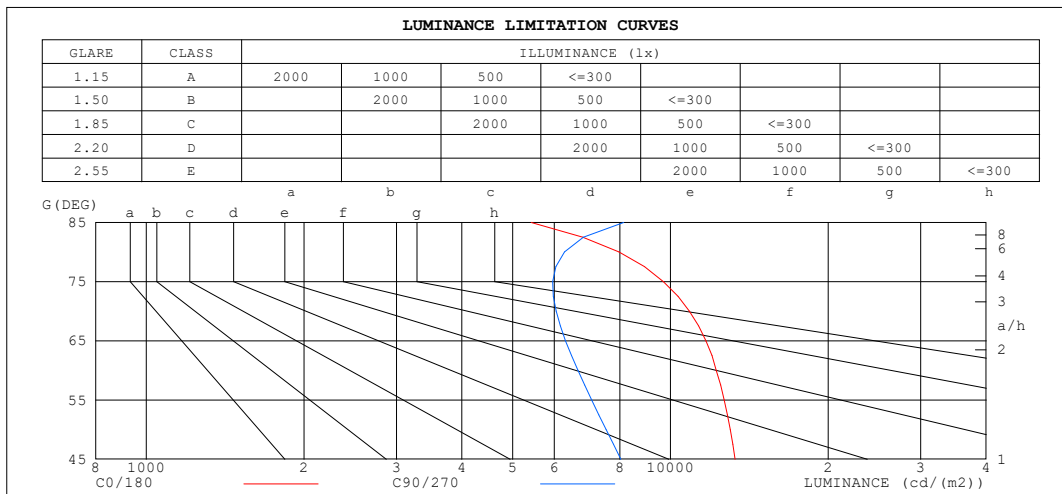
%lum = 59.8%
%lamp = 74.4%

C Range: 0 - 360DEG
C Interval: 10.0DEG
Test Speed: MEDIUM
Temperature:25.3°C
Operators:
Test Date:15 December 2022

γ Range: 0 - 150DEG
 γ Interval: 2.5DEG
Test System:EVERFINE GO-2000A_V1 SYSTEM V2.00.456
Humidity:65.0%
Test Distance:6.265m [K=1.0000]
Remarks:

LUMINANCE LIMITATION CURVES

NAME: 99LPL12/WH	TYPE:	WEIGHT: 1
SPEC.:	DIM.: 600 x 200 x 25	SERIAL No.: 0
MFR.: Elmark Industries JSC	SUR.: Cilinder	Shielding Angle:



LUMINANCE cd/(m2)		
G (DEG)	C0/180	C90/270
85	5424	8140
80	7968	6276
75	9691	5961
70	10863	6048
65	11681	6303
60	12226	6656
55	12666	7073
50	12998	7536
45	13271	8036

C Range: 0 - 360DEG
C Interval: 10.0DEG
Test Speed: MEDIUM
Temperature: 25.3°C
Operators:
Test Date: 15 December 2022

γ Range: 0 - 150DEG
γ Interval: 2.5DEG
Test System: EVERFINE GO-2000A_V1 SYSTEM V2.00.456
Humidity: 65.0%
Test Distance: 6.265m [K=1.0000]
Remarks:

```

γ Range: 0 - 150DEG
γ Interval: 2.5DEG
Test System:EVERFINE GO-2000A_V1 SYSTEM V2.00.456
Humidity:65.0%
Test Distance:6.265m [K=1.0000]
Remarks:

```

WEC AND CCEC

NAME: 99LPL12/WH	TYPE:	WEIGHT: 1
SPEC.:	DIM.: 600 x 200 x 25	SERIAL No.: 0
MFR.: Elmark Industries JSC	SUR.: Cilinder	Shielding Angle:

pcc	80%			70%			50%			30%			10%			0
pw	50%	30%	10%	50%	30%	10%	50%	30%	10%	50%	30%	10%	50%	30%	10%	0
pfc	20%			20%			20%			20%			20%			0
RCR	RCR:Room Cavity Ratio						Wall Exitance Coefficients(WEC)									
0.0																
1.0	.478	.272	.086	.462	.264	.084	.433	.248	.079	.406	.234	.075	.381	.221	.071	
2.0	.414	.227	.070	.400	.220	.068	.374	.208	.065	.349	.196	.061	.326	.185	.058	
3.0	.368	.196	.059	.356	.190	.057	.331	.180	.055	.309	.169	.052	.289	.160	.049	
4.0	.332	.172	.051	.320	.167	.049	.298	.158	.047	.278	.149	.045	.259	.141	.043	
5.0	.301	.154	.044	.291	.149	.044	.271	.141	.042	.253	.133	.040	.236	.126	.038	
6.0	.276	.138	.040	.267	.135	.039	.249	.127	.037	.232	.120	.035	.216	.114	.034	
7.0	.255	.126	.036	.246	.123	.035	.230	.116	.033	.214	.110	.032	.200	.104	.030	
8.0	.236	.115	.032	.228	.112	.032	.213	.107	.030	.199	.101	.029	.186	.095	.028	
9.0	.220	.106	.030	.213	.104	.029	.199	.098	.028	.186	.093	.027	.173	.088	.025	
10.0	.206	.099	.027	.199	.096	.027	.186	.091	.026	.174	.087	.025	.163	.082	.023	

pcc	80%			70%			50%			30%			10%			0
pw	50%	30%	10%	50%	30%	10%	50%	30%	10%	50%	30%	10%	50%	30%	10%	0
pfc	20%			20%			20%			20%			20%			0
RCR	RCR:Room Cavity Ratio						Ceiling Cavity Exitance Coefficients (CCEC)									
0.0	.405	.405	.405	.346	.346	.346	.236	.236	.236	.136	.136	.136	.043	.043	.043	
1.0	.400	.363	.329	.342	.311	.283	.234	.214	.196	.135	.124	.114	.043	.040	.037	
2.0	.391	.334	.286	.335	.288	.247	.230	.199	.172	.132	.116	.101	.043	.037	.033	
3.0	.382	.314	.259	.328	.271	.225	.225	.188	.158	.130	.110	.093	.042	.036	.030	
4.0	.372	.298	.241	.320	.258	.210	.220	.180	.148	.127	.105	.087	.041	.034	.029	
5.0	.363	.286	.229	.312	.247	.199	.215	.173	.141	.124	.101	.083	.040	.033	.028	
6.0	.354	.276	.220	.304	.239	.192	.210	.167	.136	.122	.098	.081	.039	.032	.027	
7.0	.345	.268	.214	.297	.232	.186	.205	.163	.132	.119	.096	.079	.038	.031	.026	
8.0	.337	.261	.209	.290	.226	.182	.200	.159	.129	.117	.094	.077	.038	.031	.025	
9.0	.329	.255	.205	.283	.221	.179	.196	.156	.127	.114	.092	.076	.037	.030	.025	
10.0	.321	.250	.202	.277	.217	.176	.192	.153	.125	.112	.090	.075	.036	.030	.025	

C Range: 0 - 360DEG
C Interval: 10.0DEG
Test Speed: MEDIUM
Temperature:25.3°C
Operators:
Test Date:15 December 2022

γ Range: 0 - 150DEG
γ Interval: 2.5DEG
Test System:EVERFINE GO-2000A_V1 SYSTEM V2.00.456
Humidity:65.0%
Test Distance:6.265m [K=1.0000]
Remarks:

UGR(Unified Glare Rating) Table

NAME: 99LPL12/WH						TYPE:			WEIGHT: 1		
SPEC.:						DIM.: 600 x 200 x 25			SERIAL No.: 0		
MFR.: Elmark Industries JSC						SUR.: Cilinder			Shielding Angle:		
ceiling/cavity	0.7	0.7	0.5	0.5	0.3	0.7	0.7	0.5	0.5	0.3	
walls	0.5	0.3	0.5	0.3	0.3	0.5	0.3	0.5	0.3	0.3	
working plane	0.2	0.2	0.2	0.2	0.2	0.2	0.2	0.2	0.2	0.2	
Room dimensions		Viewed crosswise					Viewed endwise				
x = 2H	y = 2H	18.8	20.2	19.3	20.7	21.2	16.7	18.1	17.2	18.6	19.1
	3H	20.2	21.5	20.7	22.0	22.6	18.0	19.2	18.5	19.8	20.4
	4H	20.7	21.9	21.2	22.5	23.1	18.5	19.7	19.1	20.3	20.9
	6H	21.0	22.2	21.6	22.7	23.4	19.0	20.2	19.6	20.8	21.4
	8H	21.1	22.2	21.7	22.8	23.4	19.3	20.4	19.9	21.0	21.6
	12H	21.1	22.2	21.7	22.8	23.4	19.5	20.6	20.1	21.2	21.8
4H	2H	18.9	20.1	19.4	20.7	21.3	17.2	18.4	17.8	19.0	19.6
	3H	20.4	21.4	21.0	22.0	22.7	18.6	19.7	19.2	20.3	21.0
	4H	21.0	21.9	21.6	22.6	23.3	19.3	20.3	19.9	20.9	21.6
	6H	21.4	22.2	22.0	22.9	23.6	20.0	20.8	20.6	21.5	22.2
	8H	21.5	22.3	22.1	22.9	23.7	20.3	21.1	20.9	21.8	22.5
	12H	21.5	22.3	22.2	22.9	23.7	20.6	21.4	21.3	22.0	22.8
8H	4H	21.0	21.8	21.7	22.5	23.2	19.5	20.3	20.2	21.0	21.7
	6H	21.5	22.2	22.2	22.9	23.7	20.3	21.0	21.0	21.7	22.5
	8H	21.6	22.3	22.3	23.0	23.8	20.8	21.4	21.5	22.1	22.9
	12H	21.7	22.3	22.4	23.0	23.8	21.3	21.8	22.0	22.5	23.4
12H	4H	21.0	21.7	21.7	22.4	23.2	19.5	20.2	20.2	20.9	21.7
	6H	21.5	22.1	22.2	22.8	23.6	20.4	21.0	21.1	21.7	22.5
	8H	21.7	22.2	22.4	23.0	23.8	20.9	21.4	21.6	22.1	23.0
Variations with the observer position at spacings(CIE Pub.117):											
S = 1.0H		+ 0.3 / - 0.3					+ 0.2 / - 0.2				
1.5H		+ 0.8 / - 0.7					+ 0.1 / - 0.3				
2.0H		+ 1.3 / - 1.2					+ 0.2 / - 0.3				

CIE Pub.117, 780.0 lm Total Lamp Luminous Flux Correct (8log(F/F0) = -0.9)
Area: 0.01484 m2

C Range: 0 - 360DEG
C Interval: 10.0DEG
Test Speed: MEDIUM
Temperature:25.3°C
Operators:
Test Date:15 December 2022

γ Range: 0 - 150DEG
γ Interval: 2.5DEG
Test System:EVERFINE GO-2000A_V1 SYSTEM V2.00.456
Humidity:65.0%
Test Distance:6.265m [K=1.0000]
Remarks:

UTILIZATION FACTORS TABLE

NAME: 99LPL12/WH	TYPE:	WEIGHT: 1
SPEC.:	DIM.: 600 x 200 x 25	SERIAL No.: 0
MFR.: Elmark Industries JSC	SUR.: Cilinder	Shielding Angle:

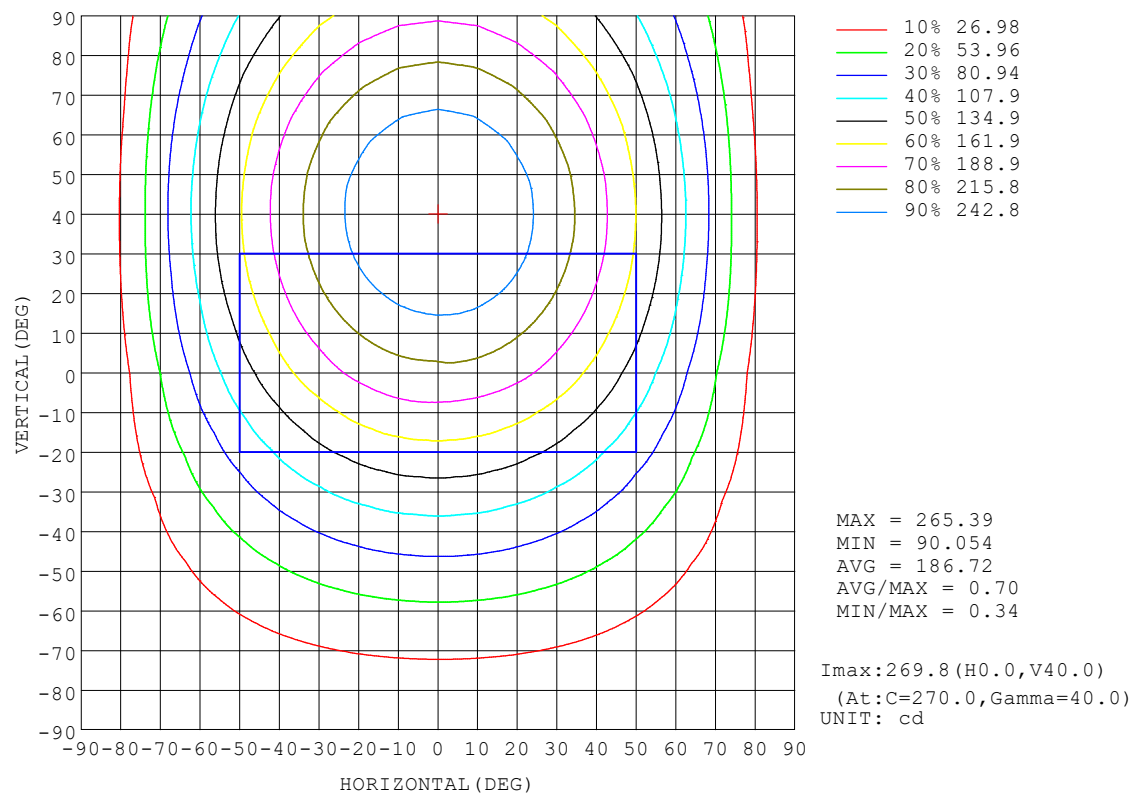
REFLECTANCE										
Ceiling	0.8	0.8	0.8	0.7	0.7	0.7	0.5	0.5	0.5	0
Walls	0.7	0.5	0.3	0.7	0.5	0.3	0.7	0.5	0.3	0
Working plane	0.2	0.2	0.2	0.2	0.2	0.2	0.2	0.2	0.2	0
ROOM INDEX	UTILIZATION FACTORS (PERCENT) $k(RI) \times RCR = 5$									
$k = 0.60$	59	44	35	58	43	35	56	42	34	26
0.80	71	55	45	69	54	44	65	52	43	33
1.00	80	64	54	78	63	53	74	64	52	41
1.25	89	73	63	86	72	62	81	68	60	48
1.50	95	80	69	92	78	68	86	74	66	53
2.00	104	91	80	101	88	79	94	83	75	61
2.50	110	97	87	106	94	85	98	89	81	65
3.00	115	103	94	110	100	91	102	94	86	70
4.00	121	111	102	116	107	99	107	100	94	76
5.00	124	116	108	119	112	105	110	104	98	80
ROOM INDEX	UF(total)									Direct
According to DIN EN 13032-2 2004			Suspended					SHRNOM = 1.25		

C Range: 0 - 360DEG
C Interval: 10.0DEG
Test Speed: MEDIUM
Temperature: 25.3°C
Operators:
Test Date: 15 December 2022

γ Range: 0 - 150DEG
γ Interval: 2.5DEG
Test System: EVERFINE GO-2000A_V1 SYSTEM V2.00.456
Humidity: 65.0%
Test Distance: 6.265m [K=1.0000]
Remarks:

ISOCANDELA DIAGRAM

NAME: 99LPL12/WH	TYPE:	WEIGHT: 1
SPEC.:	DIM.: 600 x 200 x 25	SERIAL No.: 0
MFR.: Elmark Industries JSC	SUR.: Cilinder	Shielding Angle:

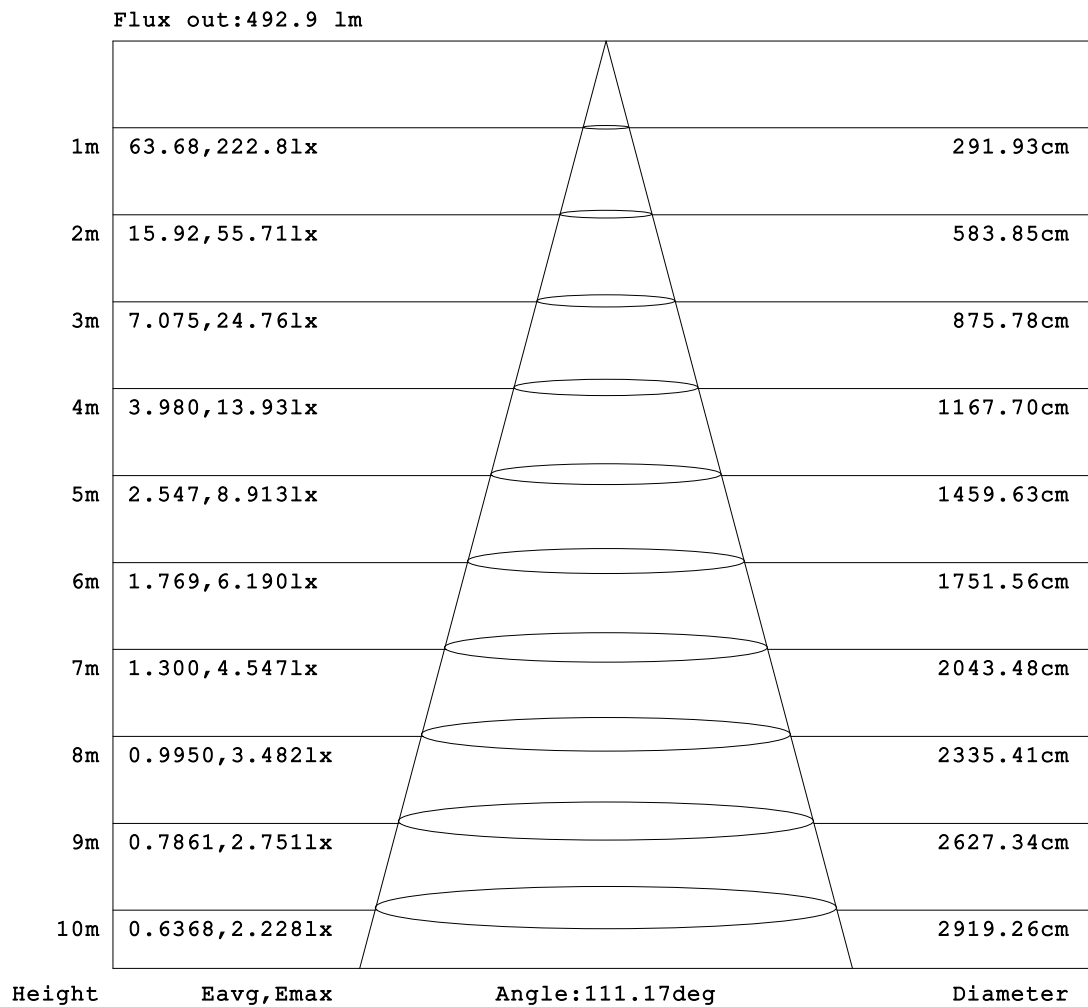


C Range: 0 - 360DEG
 C Interval: 10.0DEG
 Test Speed: MEDIUM
 Temperature:25.3°C
 Operators:
 Test Date:15 December 2022

γ Range: 0 - 150DEG
 γ Interval: 2.5DEG
 Test System:EVERFINE GO-2000A_V1 SYSTEM V2.00.456
 Humidity:65.0%
 Test Distance:6.265m [K=1.0000]
 Remarks:

AAI Figure

NAME: 99LPL12/WH	TYPE:	WEIGHT: 1
SPEC.:	DIM.: 600 x 200 x 25	SERIAL No.: 0
MFR.: Elmark Industries JSC	SUR.: Cilinder	Shielding Angle:



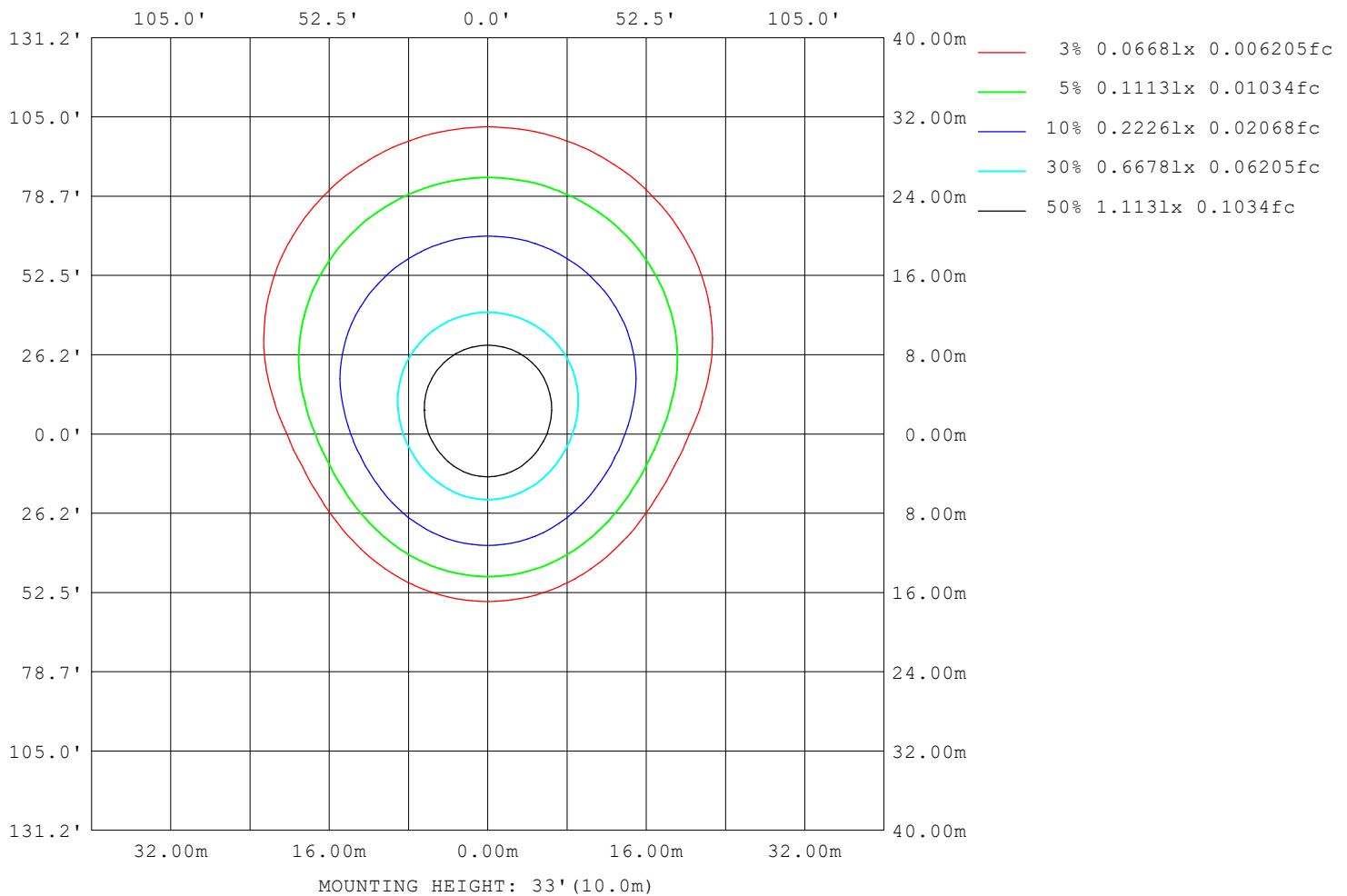
Note:The Curves indicate the illuminated area and the average illumination when the luminaire is at different distance.

C Range: 0 - 360DEG
 C Interval: 10.0DEG
 Test Speed: MEDIUM
 Temperature:25.3°C
 Operators:
 Test Date:15 December 2022

γ Range: 0 - 150DEG
 γ Interval: 2.5DEG
 Test System:EVERFINE GO-2000A_V1 SYSTEM V2.00.456
 Humidity:65.0%
 Test Distance:6.265m [K=1.0000]
 Remarks:

ISOLUX DIAGRAM

NAME: 99LPL12/WH	TYPE:	WEIGHT: 1
SPEC.:	DIM.: 600 x 200 x 25	SERIAL No.: 0
MFR.: Elmark Industries JSC	SUR.: Cilinder	Shielding Angle:



C Range: 0 - 360DEG
 C Interval: 10.0DEG
 Test Speed: MEDIUM
 Temperature: 25.3°C
 Operators:
 Test Date: 15 December 2022

γ Range: 0 - 150DEG
 γ Interval: 2.5DEG
 Test System: EVERFINE GO-2000A_V1 SYSTEM V2.00.456
 Humidity: 65.0%
 Test Distance: 6.265m [K=1.0000]
 Remarks:

LED Avg.L Report

NAME: 99LPL12/WH	TYPE:	WEIGHT: 1
SPEC.:	DIM.: 600 x 200 x 25	SERIAL No.: 0
MFR.: Elmark Industries JSC	SUR.: Cilinder	Shielding Angle:

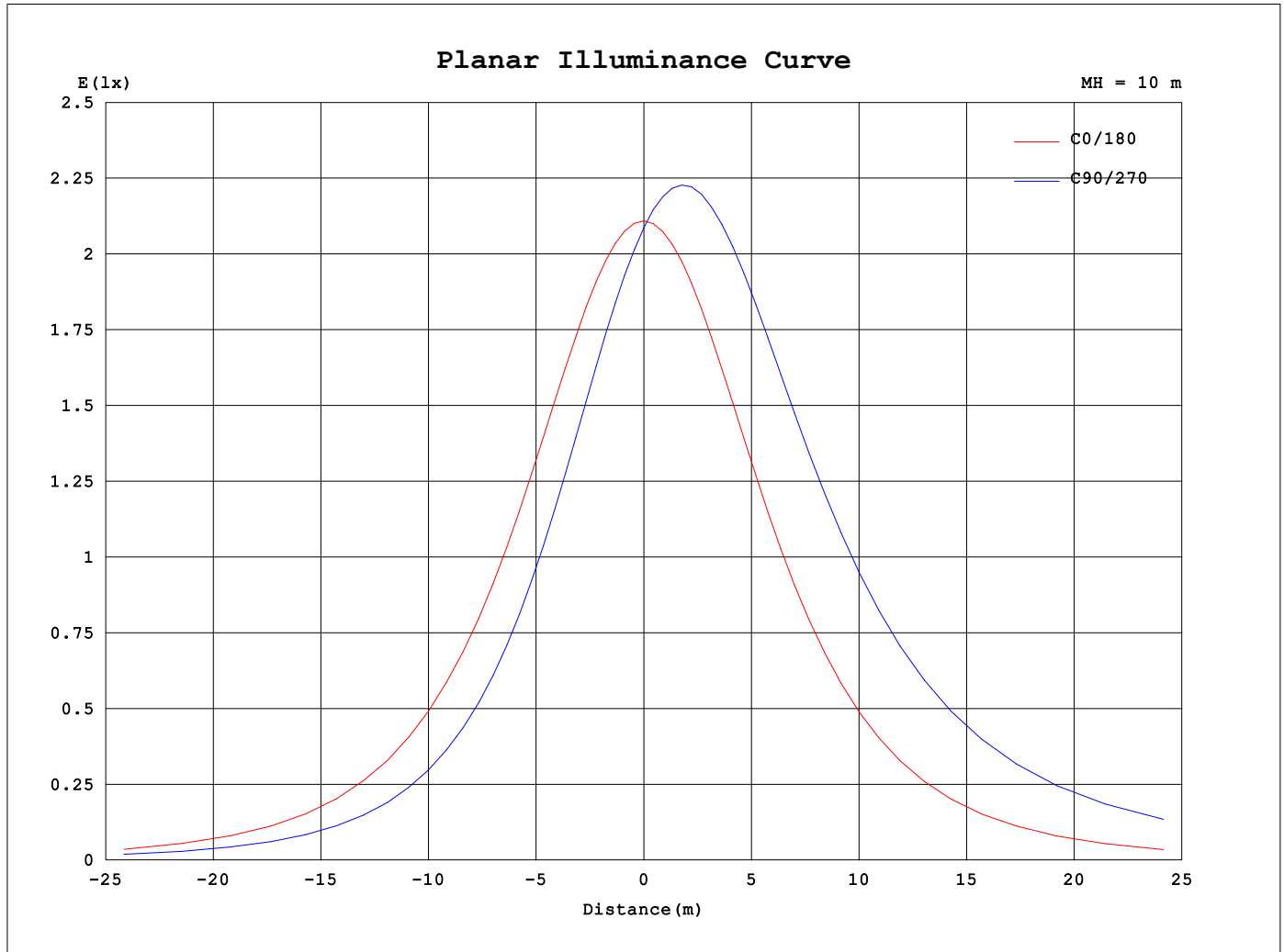
AvgL	cd/m2
L_0~180 (65) av	11508
L_0~180 (75) av	9499
L_0~180 (85) av	5162
L_90~270 (65) av	22779
L_90~270 (75) av	32221
L_90~270 (85) av	81119
L_45 (65) av	18408
L_45 (75) av	24083
L_45 (85) av	55467

Standard: GB/T 29293-2012

C Range: 0 - 360DEG
C Interval: 10.0DEG
Test Speed: MEDIUM
Temperature:25.3°C
Operators:
Test Date:15 December 2022

γ Range: 0 - 150DEG
γ Interval: 2.5DEG
Test System:EVERFINE GO-2000A_V1 SYSTEM V2.00.456
Humidity:65.0%
Test Distance:6.265m [K=1.0000]
Remarks:

Planar Illuminance Curve



C Range: 0 - 360DEG
 C Interval: 10.0DEG
 Test Speed: MEDIUM
 Temperature: 25.3°C
 Operators:
 Test Date: 15 December 2022

γ Range: 0 - 150DEG
 γ Interval: 2.5DEG
 Test System: EVERFINE GO-2000A_V1 SYSTEM V2.00.456
 Humidity: 65.0%
 Test Distance: 6.265m [K=1.0000]
 Remarks:

LUMINOUS DISTRIBUTION INTENSITY DATA

NAME: 99LPL12/WH	TYPE:	WEIGHT: 1
SPEC.:	DIM.: 600 x 200 x 25	SERIAL No.: 0
MFR.: Elmark Industries JSC	SUR.: Cilinder	Shielding Angle:

Table--1

UNIT: cd

C (DEG) γ (DEG)	0	10	20	30	40	50	60	70	80	90	100	110	120	130	140	150	160	170	180
0	209	209	209	209	209	209	209	209	209	209	209	209	209	209	209	209	209	209	209
5	208	206	204	202	200	199	198	197	196	196	196	197	197	199	200	202	204	206	208
10	205	201	197	193	190	187	185	184	183	182	183	183	185	187	190	193	197	201	205
15	201	194	188	183	179	175	172	170	169	168	169	170	172	175	178	183	188	194	200
20	194	186	178	172	166	162	158	156	154	154	154	156	158	162	166	171	178	185	194
25	186	176	167	160	153	148	144	142	140	140	140	142	144	148	152	159	166	175	185
30	176	165	154	146	139	134	130	128	126	125	125	127	129	133	138	145	153	163	175
35	165	152	140	132	125	120	116	113	112	111	111	113	115	119	124	131	139	151	164
40	152	138	126	117	110	105	101	99.5	97.8	97.6	97.6	99.1	101	105	109	116	125	137	151
45	138	123	111	102	95.3	91.2	88.0	86.1	84.9	84.5	84.7	85.7	87.5	90.4	94.3	101	109	122	137
50	123	107	94.8	86.9	81.2	77.5	74.9	73.3	72.4	72.0	72.2	72.9	74.3	76.6	80.2	85.8	93.7	106	122
55	107	90.9	79.3	72.0	67.2	64.3	62.4	61.3	60.6	60.3	60.4	60.9	61.8	63.6	66.3	70.9	78.2	89.6	106
60	90.0	74.0	63.6	57.6	54.1	52.0	50.8	50.1	49.6	49.5	49.5	49.7	50.2	51.3	53.1	56.6	62.5	72.8	89.3
65	72.6	57.2	48.5	44.2	41.9	40.8	40.2	39.9	39.7	39.6	39.5	39.6	39.6	40.1	41.0	43.2	47.4	56.0	71.7
70	54.7	40.8	34.5	32.0	30.9	30.7	30.6	30.8	30.8	30.8	30.6	30.5	30.2	30.1	30.2	31.1	33.5	39.7	53.8
75	36.9	25.8	22.2	21.4	21.5	21.9	22.3	22.7	22.9	22.9	22.8	22.5	22.0	21.4	20.9	20.7	21.3	24.7	36.1
80	20.4	13.2	12.3	12.9	13.7	14.6	15.2	15.8	16.1	16.2	16.0	15.7	15.0	14.2	13.2	12.3	11.6	12.3	19.5
85	6.96	4.67	5.43	6.60	7.66	8.69	9.46	10.1	10.4	10.6	10.3	9.99	9.27	8.44	7.34	6.20	5.00	4.12	6.40
90	0.56	0.93	1.66	2.53	3.44	4.32	5.01	5.58	5.88	6.01	5.85	5.51	4.92	4.18	3.28	2.36	1.51	0.84	0.48
95	0.54	0.72	0.89	1.13	1.38	1.68	2.12	2.47	2.70	2.78	2.70	2.45	2.11	1.70	1.44	1.20	0.95	0.78	0.53
100	0.64	0.83	0.99	1.23	1.44	1.69	1.84	2.01	2.07	2.13	2.09	2.04	1.89	1.75	1.51	1.31	1.05	0.88	0.63
105	0.74	0.93	1.09	1.34	1.54	1.78	1.93	2.10	2.16	2.21	2.17	2.13	1.98	1.85	1.62	1.42	1.17	1.00	0.74
110	0.85	1.04	1.20	1.44	1.64	1.87	2.02	2.17	2.23	2.29	2.25	2.21	2.08	1.94	1.72	1.54	1.29	1.11	0.85
115	0.97	1.15	1.31	1.54	1.73	1.95	2.09	2.24	2.29	2.35	2.31	2.28	2.15	2.03	1.82	1.64	1.41	1.24	0.97
120	1.08	1.27	1.41	1.63	1.81	2.02	2.14	2.28	2.34	2.40	2.36	2.33	2.21	2.10	1.91	1.74	1.52	1.36	1.09
125	1.19	1.37	1.51	1.71	1.87	2.07	2.18	2.31	2.36	2.41	2.39	2.37	2.25	2.16	1.98	1.83	1.62	1.48	1.20
130	1.30	1.46	1.59	1.78	1.93	2.10	2.21	2.31	2.38	2.41	2.40	2.36	2.28	2.20	2.04	1.91	1.72	1.59	1.31
135	1.40	1.55	1.66	1.84	1.97	2.12	2.22	2.31	2.38	2.40	2.41	2.36	2.29	2.22	2.08	1.97	1.80	1.69	1.41
140	1.49	1.63	1.73	1.89	1.99	2.12	2.22	2.30	2.37	2.38	2.41	2.36	2.30	2.24	2.12	2.02	1.88	1.77	1.50
145	1.57	1.70	1.78	1.93	2.01	2.12	2.22	2.28	2.36	2.36	2.38	2.34	2.30	2.24	2.14	2.06	1.94	1.85	1.59
150	1.64	1.74	1.83	1.93	2.02	2.12	2.21	2.26	2.32	2.32	2.35	2.33	2.29	2.24	2.15	2.09	1.99	1.90	1.65
155	0.00	0.00	0.00	0.00	0.00	0.00	0.00	0.00	0.00	0.00	0.00	0.00	0.00	0.00	0.00	0.00	0.00	0.00	0.00
160	0.00	0.00	0.00	0.00	0.00	0.00	0.00	0.00	0.00	0.00	0.00	0.00	0.00	0.00	0.00	0.00	0.00	0.00	0.00
165	0.00	0.00	0.00	0.00	0.00	0.00	0.00	0.00	0.00	0.00	0.00	0.00	0.00	0.00	0.00	0.00	0.00	0.00	0.00
170	0.00	0.00	0.00	0.00	0.00	0.00	0.00	0.00	0.00	0.00	0.00	0.00	0.00	0.00	0.00	0.00	0.00	0.00	0.00
175	0.00	0.00	0.00	0.00	0.00	0.00	0.00	0.00	0.00	0.00	0.00	0.00	0.00	0.00	0.00	0.00	0.00	0.00	0.00
180	0.00	0.00	0.00	0.00	0.00	0.00	0.00	0.00	0.00	0.00	0.00	0.00	0.00	0.00	0.00	0.00	0.00	0.00	0.00

C Range: 0 - 360DEG

C Interval: 10.0DEG

Test Speed: MEDIUM

Temperature:25.3°C

Operators:

Test Date:15 December 2022

γ Range: 0 - 150DEG

γ Interval: 2.5DEG

Test System:EVERFINE GO-2000A_V1 SYSTEM V2.00.456

Humidity:65.0%

Test Distance:6.265m [K=1.0000]

Remarks:

LUMINOUS DISTRIBUTION INTENSITY DATA

NAME: 99LPL12/WH	TYPE:	WEIGHT: 1
SPEC.:	DIM.: 600 x 200 x 25	SERIAL No.: 0
MFR.: Elmark Industries JSC	SUR.: Cilinder	Shielding Angle:

Table--2

UNIT: cd

C (DEG) γ (DEG)	190	200	210	220	230	240	250	260	270	280	290	300	310	320	330	340	350		
0	209	209	209	209	209	209	209	209	209	209	209	209	209	209	209	209	209		
5	210	213	215	217	219	220	221	222	222	222	221	220	219	217	215	213	211		
10	210	214	219	223	227	230	232	233	234	233	232	230	227	223	219	215	210		
15	207	214	221	227	233	238	241	244	244	244	242	238	234	228	222	215	208		
20	203	212	222	230	238	245	249	252	253	252	249	245	239	231	222	213	204		
25	196	209	220	231	241	249	255	259	261	259	256	250	242	232	221	209	198		
30	189	203	217	231	243	252	260	265	266	265	260	253	243	231	218	204	190		
35	179	196	213	228	242	254	262	268	269	268	262	254	243	229	213	197	181		
40	168	188	206	224	240	253	262	269	270	269	263	253	240	225	207	189	170		
45	156	178	198	218	236	250	261	268	270	267	261	250	236	219	199	179	158		
50	143	166	189	211	229	245	257	264	267	264	257	245	230	211	190	167	144		
55	128	154	178	201	222	239	251	259	262	259	251	239	222	202	179	155	130		
60	113	140	166	191	212	230	243	252	255	252	243	230	212	191	167	141	114		
65	96.1	125	152	178	201	220	234	243	246	243	234	220	201	178	153	126	97.3		
70	79.1	109	138	165	189	209	223	233	236	233	223	208	188	165	138	110	80.2		
75	61.5	92.6	123	151	175	196	211	222	225	221	211	196	175	151	123	93.1	62.5		
80	44.2	76.1	107	137	162	183	199	209	212	209	199	183	161	136	107	76.4	45.0		
85	28.7	60.7	92.3	122	148	170	186	196	199	196	185	169	147	122	92.0	60.7	29.2		
90	17.6	48.1	79.6	109	135	157	172	183	186	182	172	156	134	109	79.1	47.8	17.6		
95	11.7	38.3	68.1	96.7	122	143	159	169	172	168	158	142	121	95.9	67.4	37.8	11.4		
100	8.87	31.2	58.2	85.2	109	130	145	155	157	154	144	129	108	84.2	57.4	30.4	8.46		
105	7.29	25.8	49.8	74.6	97.0	117	131	140	143	140	130	116	96.0	73.6	48.9	25.1	6.86		
110	6.28	21.7	42.7	65.1	85.9	104	117	126	128	126	116	103	84.8	64.0	41.7	20.9	5.84		
115	5.51	18.5	36.5	56.4	75.1	91.5	103	112	114	111	103	90.5	74.0	55.3	35.5	17.7	5.07		
120	4.87	15.8	31.2	48.5	65.1	79.7	90.5	97.9	99.7	97.6	89.7	78.7	64.0	47.4	30.2	15.0	4.44		
125	4.27	13.5	26.3	41.3	55.7	68.6	78.3	84.6	86.4	84.3	77.6	67.6	54.6	40.2	25.5	12.8	3.87		
130	3.51	11.4	22.2	34.5	46.7	58.1	66.5	72.0	73.5	71.6	65.9	57.2	46.0	33.7	21.4	10.8	3.22		
135	2.75	9.09	18.5	28.7	38.7	46.6	55.4	60.0	61.3	59.7	54.8	47.5	38.1	27.9	17.8	8.67	2.41		
140	2.36	7.08	14.5	23.4	31.6	39.0	45.2	49.0	50.0	48.7	44.6	38.6	31.0	22.7	13.3	6.40	2.08		
145	2.06	5.40	10.4	18.1	25.1	31.0	34.1	38.9	39.7	38.6	35.4	30.6	24.5	17.2	9.92	4.84	1.84		
150	1.83	4.04	8.01	12.6	18.7	23.8	27.1	29.8	30.5	29.6	27.1	23.4	17.9	12.2	7.18	3.48	1.72		
155	0.00	0.00	0.00	0.00	0.00	0.00	0.00	0.00	0.00	0.00	0.00	0.00	0.00	0.00	0.00	0.00	0.00		
160	0.00	0.00	0.00	0.00	0.00	0.00	0.00	0.00	0.00	0.00	0.00	0.00	0.00	0.00	0.00	0.00	0.00		
165	0.00	0.00	0.00	0.00	0.00	0.00	0.00	0.00	0.00	0.00	0.00	0.00	0.00	0.00	0.00	0.00	0.00		
170	0.00	0.00	0.00	0.00	0.00	0.00	0.00	0.00	0.00	0.00	0.00	0.00	0.00	0.00	0.00	0.00	0.00		
175	0.00	0.00	0.00	0.00	0.00	0.00	0.00	0.00	0.00	0.00	0.00	0.00	0.00	0.00	0.00	0.00	0.00		
180	0.00	0.00	0.00	0.00	0.00	0.00	0.00	0.00	0.00	0.00	0.00	0.00	0.00	0.00	0.00	0.00	0.00		

C Range: 0 - 360DEG

C Interval: 10.0DEG

Test Speed: MEDIUM

Temperature:25.3°C

Operators:

Test Date:15 December 2022

γ Range: 0 - 150DEG

γ Interval: 2.5DEG

Test System:EVERFINE GO-2000A_V1 SYSTEM V2.00.456

Humidity:65.0%

Test Distance:6.265m [K=1.0000]

Remarks: